

Product Overview

Cable Chains



CONDUCTIX
wampfler

Ⓞ DELACHAUX GROUP



Pre-assembled systems

A chain of successes!

We move your business

Wherever you find people and things in motion, you'll also find custom-configured Conductix-Wampfler solutions for the transmission of energy, data and media.

These solutions include an extensive line of energy guiding chains. Container cranes, steel mills and powerplants, high-rack storage and retrieval systems, green-houses and car washes are only a few of the many typical applications for Conductix-Wampfler energy guiding chains.

The enormous variety of different configurations, materials, designs and accessories makes Conductix-Wampfler energy guiding chains the preference when it comes to finding the right solution, no matter how difficult or unusual the application!

And, Conductix-Wampfler offers not only products that feature robust, heavy-duty construction and reliable operation even under punishing operating conditions but also fast, efficient service and support.

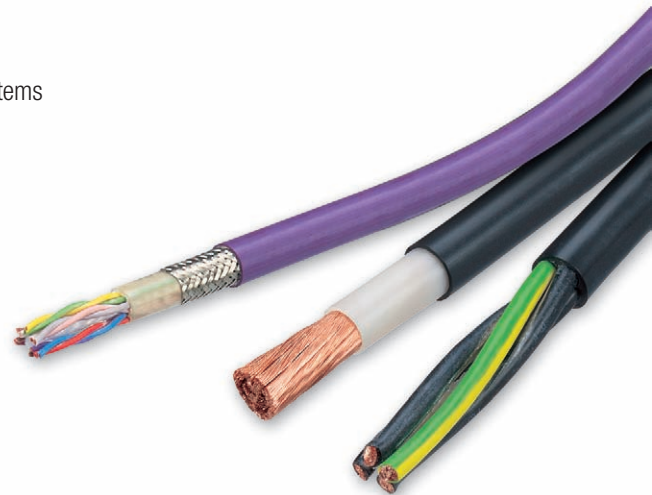
As a result it's no surprise that ConductixWampfler energy guiding chains are found – often in combination with other Conductix-Wampfler energy transmission systems – wherever mobility is important. Worldwide!



Provides a safe process: Steel chain with covers in a steel mill

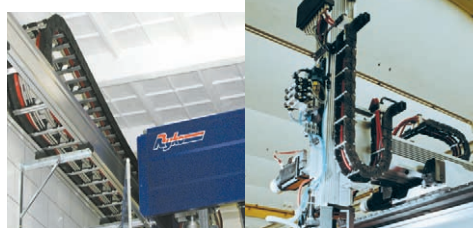


Conductix-Wampfler plastic chain with aluminium strays on a port crane

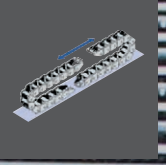
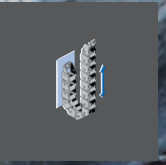


Everything from a single source – Conductix-Wampfler also supplies optimum cables.

Energy chains can be installed quite everywhere, like in this car wash, for example.



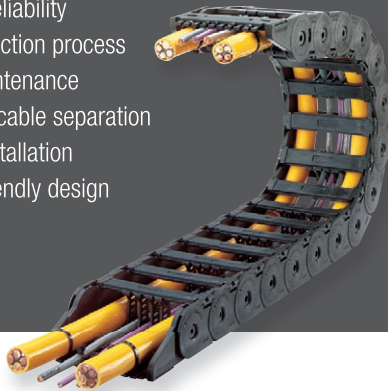
A portal robot equipped with a plastic chain permits reliable, efficient picking, placing and positioning.



Three lines –Thousands of possibilities!

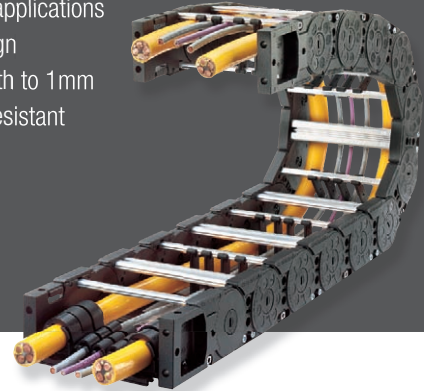
► Plastic Chains

- For medium duty applications
- Proven reliability
- Easy selection process
- Low Maintenance
- Modular cable separation
- Quick Installation
- Cable friendly design



► Plastic Chains with aluminium stays

- For Medium and Heavy duty applications
- Robust design
- Variable width to 1mm
- High wear resistant



System Preassembly



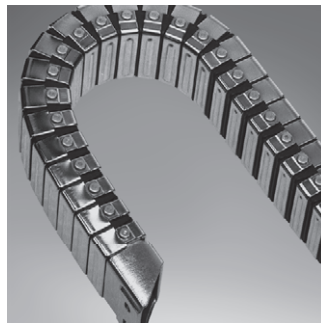
- Complete customised solution supply including:

- Preparation of cables
- Assignment of cables to chains as a function of design drawings and EMC requirements
- Installation of separators and frame stays
- Securing of cable ends
- Preparation of energy guiding system for transport by suitable means

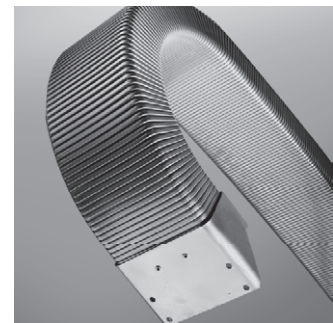
Other Options



Robotrax
for 3 dimensional movement



Conduflex
completely enclosed cable carrier



Mobiflex
flexible metal helical tubes

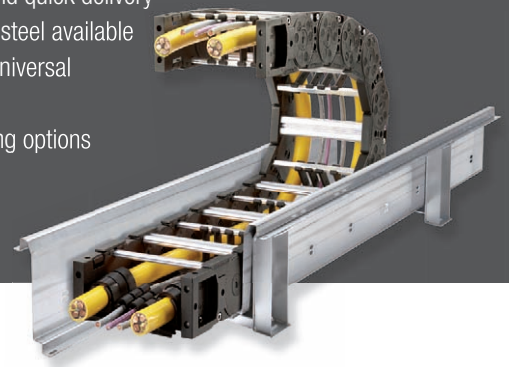
► **Steel Chains**

- For Heavy Duty applications
- Variable width to 1 mm
- Stainless Steel option available
- Extremely robust and stable for heavy mechanical loads
- Suited to extreme conditions
- Vertical or horizontal cable separation available



+ **Trough Systems**

- Locally designed and manufactured
- Modular for easy selection, flexibility and quick delivery
- Stainless / steel available
- Easy and universal assembly
- Simple fixing options



Energy Chain Cables

- Low weight and small diameters as a result of particularly thin conductor insulation and sheaths
- Best insulation materials for small wall thickness
- Very high resilience due to short lay pitches (7 to 8 x Ø)
- Flexible sheath compound with high resistance to tearing and abrasion
- Resistance to corkscrews as a result of a stranding with reverse twist
- Extruded filler in interstices provides stable construction
- High wear resistance against chain material

| |  |  |  |
|--|---|---|---|
| Power / Control | | | |
| Conductix-Wampfler Cable - | CV | CXG | CXP |
| Composite Power + Control + Data | | | |
| Conductix-Wampfler Cable - | CV-D | CXG-D | CXP-D |
| Outer jacket material | PVC | Rubber | PUR |
| Suitable for use outdoors | ● | ● | ● |
| Voltage range [V / kV] | up to 0.6 / 1 | up to 0.6 / 1 | up to 0.6 / 1 |
| Tensile load capacity max. [N / mm²] | 15 | 15 | 15 |
| Travel speed max. [m / min] | 140 | 300 | 250 |
| Temperature range flexing [°C] | -5 | -35 | -30 |
| | up to | up to | up to |
| | 80 | 80 | 80 |

● ideal ● limited

www.conductix.com.au

Victoria (Head Office)

14 England Street
Dandenong VIC 3175
Phone: +61 3 9706 8844
Fax: +61 3 9794 9298

New South Wales

4/77 Newton Road
Wetherill Park NSW 2164
Phone: +61 2 9604 9800
Fax: +61 2 9604 9844

Queensland

45 Millenium Place
Tingalpa QLD 4173
Phone: +61 7 3902 6000
Fax: +61 7 3902 6001

Western Australia

6/133 Kelvin Road
Maddington WA 6109
Phone: +61 8 9452 1986
Fax: +61 8 9459 0503



DELACHAUX GROUP